

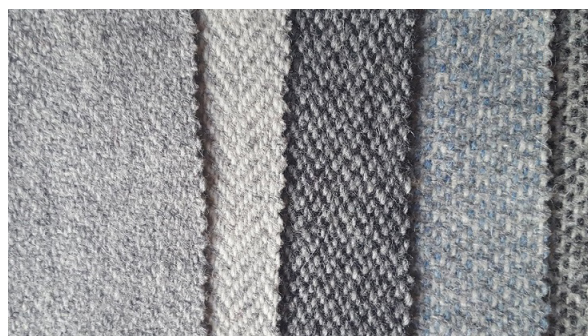
What fabrics?



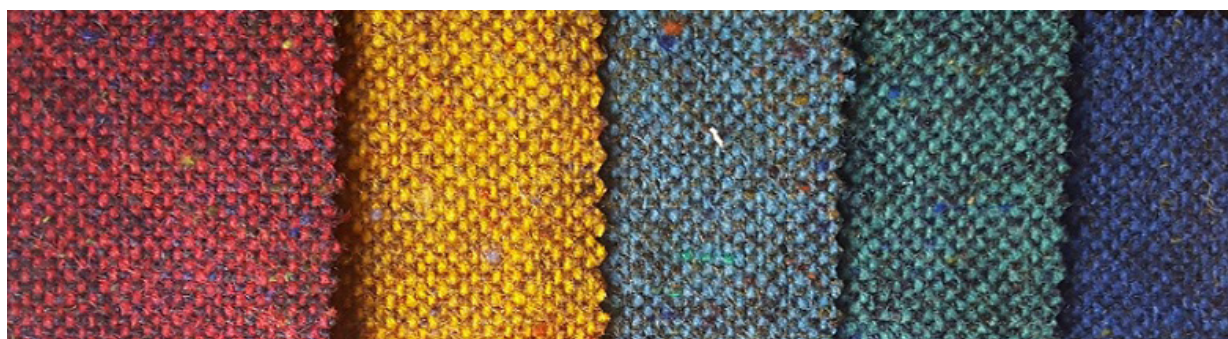
Magee Weaving Ethical and Sustainability Trading Statement

Heritage

Established over 150 years ago, Magee is a fourth and fifth-generation family business which specialises in designing, weaving and tailoring luxury fabric and clothing in Donegal. Magee 1866 started as a draper's shop in Donegal Town, buying and selling hand-woven tweed and today the Weaving Mill exports fabric across the world. Founded by John Magee, the business was bought in 1900 by his cousin Robert Temple, it remains a true family business with Lynn Temple and the three children, Charlotte, Patrick and Rosy at the helm. Today, fabric and family remain an essential part of this iconic Irish heritage brand. The Magee 1866 group operates across manufacturing, wholesale, retail and ecommerce. At its heart, the Donegal based Magee Weaving Mill designs, weaves and finishes high quality wool and other natural fibre fabrics. It is one of the few remaining family owned mills in Ireland.



Magee Irish Wool Collection



Magee Bluestack Forward Collection

Sustainability Focus

Quality

Quality is our principle product value and is evident from our fabric to finished garment. Inherent in this value is sustainability which is key to the brand's heritage and future. **Sustainable fabric and high quality, long lasting products are part of the brand DNA. Magee Weaving pre-dominantly uses natural fibres like wool and linen, which are biodegradable, renewable and manufactured locally.** The design philosophy promotes the sustainable concept of 'slow fashion' through timeless and classic collections.

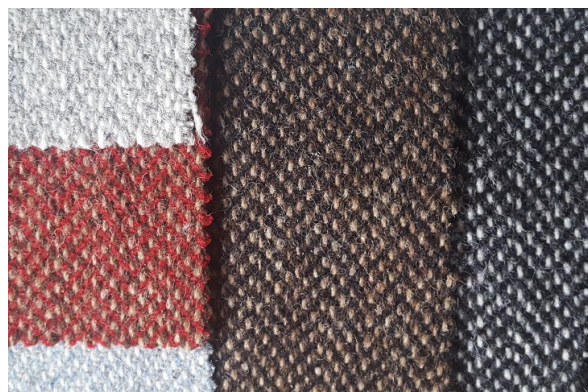
Family ethos

The Temple family behind Magee 1866 are committed to manufacturing in the most sustainable and environmentally friendly way possible.

The Temple family have planted over 150 acres of forestry to off-set carbon emissions, grow their own organic vegetables & breed their own organic grass-fed cattle.

Community

Being the most significant employer in South West Donegal for the past 150 years, Magee 1866 is an established part of the local community and continues to provide employment in a highly skilled business in a rural area. Magee 1866 employ 90 people in Ireland. We are an equal opportunities employer with the workforce at 50% men and 50% women. This ratio is apparent across all levels in the group from junior roles to senior management and at board level.



Magee Irish Wool Collection

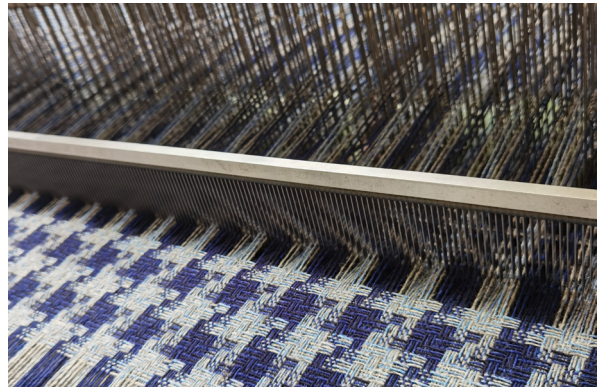
What fabrics?



Raw Materials

Magee 1866 focus on weaving 'Noble Natural Fibres':

- Wool: biodegradable & renewable. It is sourced by our trusted spinning partners within the E.U. Countries of origin include: Ireland, Norway, Peru, Australia, New Zealand. We acknowledge that mulesing is practiced in some areas in Australia but not in any of the other countries listed previous. Complete traceability of wool to the farm source is possible on specific projects. This requires pre-order batching, MOQs, longer lead times and added administration costs.
- Linen: biodegradable & renewable. Our Irish Linen is grown in Northern France, spun in Poland and Italy and designed, woven & finished in Donegal.
- We also work with alpaca, cashmere, mohair and silk. All are biodegradable & renewable.



Magee St. Brigid's Collection



Manufacturing

- Warping, weaving, and finishing of fabric is done in house, allowing for complete control and high standards ensured at all times.
- Within Magee Weaving, synthetic dyes are used to cater for a large colour palette. Reactive and acid dyes used on our fibres comply with EU standards. Please note that natural dye alternatives require heavy metals to adhere to the fibre, which can be as harmful to the environment. We conclude that natural dyes are not necessarily a better environmental alternative. – we are searching for new alternatives.
- Mild detergents are used, similar to those of domestic washing machine concentrations.
- Cardboard waste is re-cycled. We are researching recycled fibre merchants but they are currently based further away than the transport miles warrant.



Energy

- Magee 1866 purchases electricity from a Green energy provider (i.e. Hydro or wind), currently coming from mainstream grid.
- Oil is used to generate heat in the absence of any other alternatives in our geographical region e.g. there is no natural gas pipe line Co. Donegal. Currently, due to the cyclical nature of the fashion industry it has not yet been viable (in emissions or financially) to run a wood chip boiler to power the mill all year. Alternatives to fossil fuels are being urgently sought, costed and plans drawn to invest in solar power within the next 3 years. We do not dye fabric or fibre on site, this process is carried out by our yarn supplier who comply to reach standards. We also have un-dyed and un-bleached fabrics as options.
- Local water is used in our production of cloth. Due to the fact that Donegal has a high volume and frequency of rainfall, (1600mm p.a.), this resource is not under pressure from shortage.

What fabrics?



Acoustic Performance

To assess the level of acoustic influence of the materials a comparative test was completed. An initial set of measurements were made on a standard 65mm thick reference materials. Iterations of tests were then carried out with each material laid across the core material. To measure the reverberation time multiple test measurement positions were used for source and receiver locations.

The test materials were identified as:



C - Medium weight (911)



D - Light weight (5012)



E - Wool Lurex (5013L)



F - Irish Wool (1250)



G - Heavier weight (302)

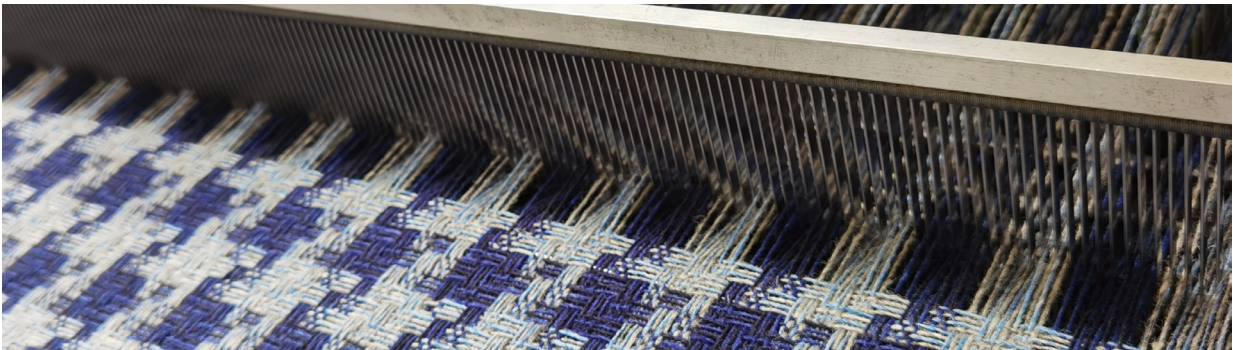
When used over a 65mm core material the following performances were measured:

Test	Octave Centre - band (Hz)							Class
	125	250	500	1000	2000	4000	8000	
C - Medium weight (911)	0.41	0.65	0.91	0.99	1.00	0.97	0.96	A
D - Light weight (5012)	0.38	0.67	0.92	0.96	0.99	0.97	0.93	A
E - Wool Lurex (5013L)	0.37	0.61	0.96	1.00	1.00	0.97	0.95	A
F - Irish Wool (1250)	0.34	0.63	0.94	1.00	1.00	0.94	0.92	A
G - Heavier weight (302)	0.40	0.67	0.96	1.00	1.00	0.93	0.94	A

In order to assess the influence of the material a comparison between the uncovered 65mm board and the covered 65mm board was made. Typically in these measurements we would suggest that a +/-5% difference be acceptable as acoustically transparent. For simplicity the differences within 5% are left **BLACK**, those with an improvement beyond 5% are **GREEN**, and a decrease in performance of greater than 5% in **RED**.

Test	Octave Centre - band (Hz)						
	125	250	500	1000	2000	4000	8000
C - Medium weight (911)	0.08	0.01	-0.01	-0.02	0.08	0.10	0.11
D - Light weight (5012)	0.05	0.03	0.00	-0.04	0.07	0.10	0.08
E - Wool Lurex (5013L)	0.04	-0.03	0.04	0.00	0.08	0.11	0.09
F - Irish Wool (1250)	0.01	-0.01	0.02	0.00	0.08	0.07	0.07
G - Heavier weight (302)	0.07	0.04	0.04	0.00	0.08	0.06	0.09

It can be seen that the test materials are not perfectly acoustically transparent; however their effect is such that the composite acoustic performance of the material and core is marginally improved.

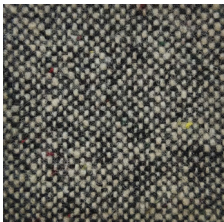


What fabrics?

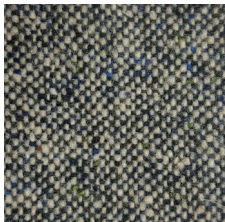


Below you will find a selection of popular fabrics,
Discover their full range at: www.magee1866.com

302 Bluestack



Bluestack
302/9089/A1



Bluestack
302/9089/A2



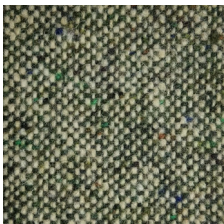
Bluestack
302/9089/A3



Bluestack
302/9089/A4

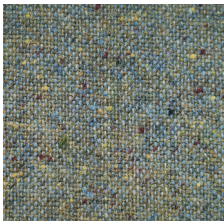


Bluestack
302/9089/A5

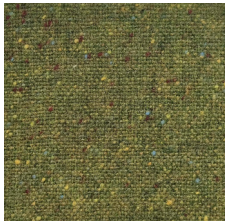


Bluestack
302/9089/A6

1055



1055
1055/2148/B5



1055
1055/2148/C5



1055
1055/2148/F5

What fabrics?



Below you will find a selection of popular fabrics,
Discover their full range at: www.magee1866.com

RN767



RN767
RN767/2100/A17



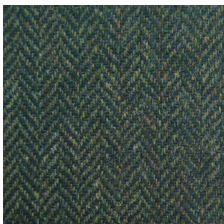
RN767
RN767/2100/F14



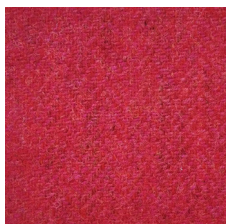
RN767
RN767/2100/G2



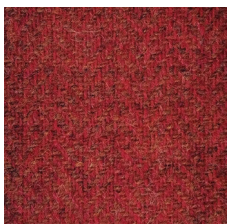
RN767
RN767/2100/G8



RN767
RN767/2100/J9



RN767
RN767/2100/R31



RN767
RN767/2100/R35

1177



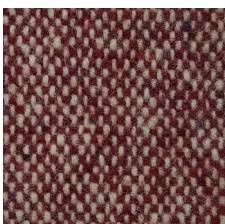
1177
1177/9090/A1



1177
1177/9090/A2



1177
1177/9090/A3



1177
1177/9090/A4



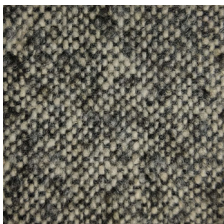
1177
1177/9090/A5

What fabrics?

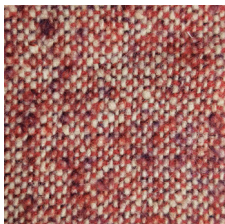


Below you will find a selection of popular fabrics,
Discover their full range at: www.magee1866.com

1230



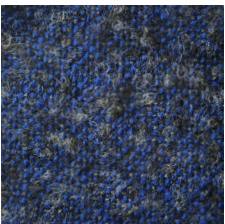
1230
1230/9091/A1



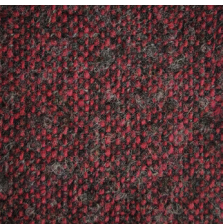
1230
1230/9091/A2



1230
1230/9091/A3



1230
1230/9091/B1



1230
1230/9091/D1

1250



1250
1250/2138/A1



1250
1250/2138/C1



1250
1250/2139/A1



1250
1250/2139/C1



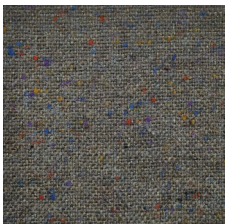
1250
1250/2215/A1

5103



5103
5103/7356/F2

5013 L



5013 L
5013L/7357/C5



5013 L
5013L/7357/D5

5014 L



5014 L
5014L/7259/D5

What fabrics?

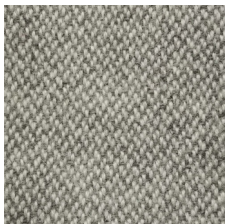


Below you will find a selection of popular fabrics,
Discover their full range at: www.magee1866.com

1124



1124
1124/2160/A1



1124
1124/2160/A2

1287



1287
1287/2165/B2

1290



1290
1290/2170/C1

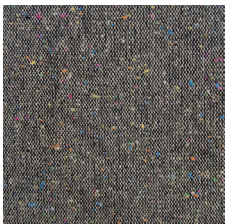
1182



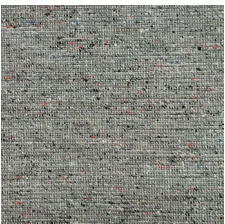
1182
1182/2004/A1



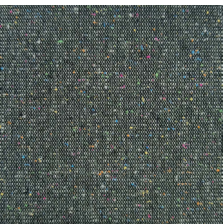
1182
1182/2004/A2



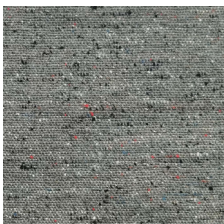
1182
1182/2004/A4



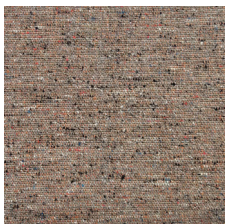
1182
1182/2004/B2



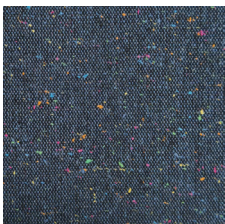
1182
1182/2004/B4



1182
1182/2004/C2



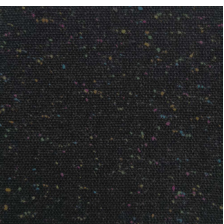
1182
1182/2004/D2



1182
1182/2004/E4



1182
1182/2004/F2



1182
1182/2004/F4

What fabrics?



Below you will find a selection of popular fabrics,
Discover their full range at: www.magee1866.com

5019

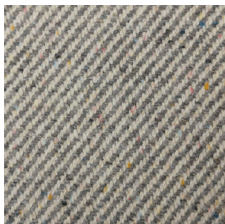


5019
5019/7367/A1



5019
5019/7367/A3

5020



5020
5020/7383/A2

RN111



RN111
RN111/6412/A1

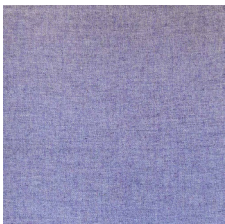
5012 - Contact us for MOQ on this range



5012
5012/1063/B5



5012
5012/1063/C11



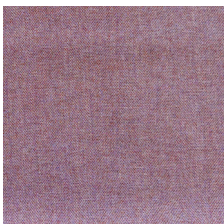
5012
5012/1063/D12



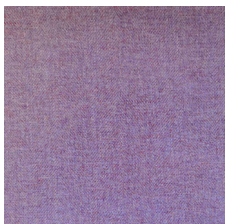
5012
5012/1063/D15



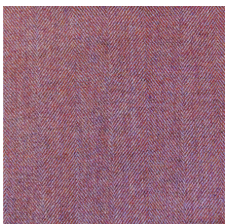
5012
5012/1063/D16



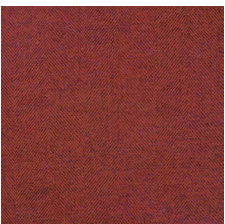
5012
5012/1063/D17



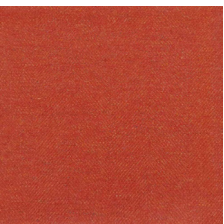
5012
5012/1063/D19



5012
5012/1063/D20



5012
5012/1063/E8



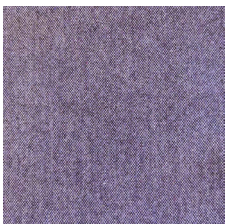
5012
5012/1063/E14



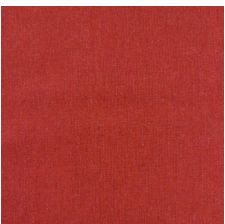
5012
5012/1065/B3



5012
5012/1065/D4



5012
5012/1065/D5

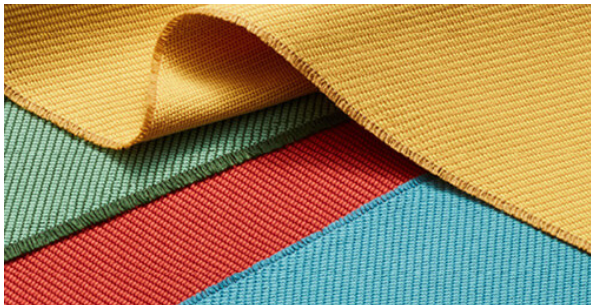


5012
5012/1065/E6

What fabrics?

camira

With roots dating back to 1783, we've always had a belief that you "only ever get out what you put in," which is why so much of who we are goes into what we make. We put our heart and soul into making fabrics, but with a real sense of responsibility for the bigger picture; from the raw materials we use, to our manufacturing processes, and the involvement of many different people from start to finish.



Sustainability

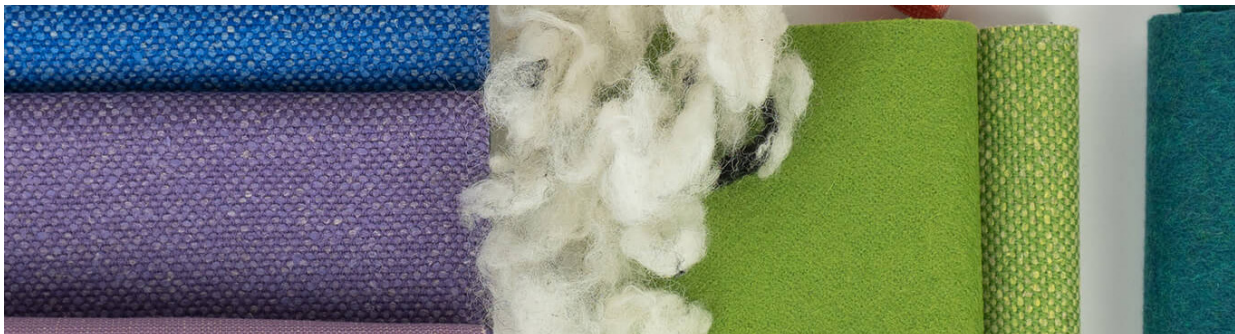
Our sustainability policy is underpinned by the following guiding principles:

- Maintain conformance with ISO 14001 (Environmental Management System).
- Source materials from environmentally responsible suppliers.
- Embrace environmental decision making in product design and development.
- Reduce our energy and CO2 footprint.
- Reduce waste at source through continual improvement of our supply chain and production quality.
- Engage with people to encourage awareness, knowledge and participation.
- Ensure compliance with relevant legislation.
- Set, monitor and review environmental objectives in line with the principles of this policy.

Quality

Our quality policy is underpinned by the following guiding principles:

- Maintain conformance with ISO 9001 (Quality Management System) and ISO 17025 (competence in testing and calibration).
- Comply with relevant industry, legal and regulatory requirements.
- Maintain robust technical governance through best practice in testing, calibration and certification.
- Target continuous improvement in product quality, delivery promise, customer service, and complaint handling.
- Inspire and engage with our people, customers and suppliers through effective implementation and monitoring of controlled processes.
- Promote innovation and investment in people, talent, plant and equipment.
- Set, monitor and review quality objectives in line with the principles of this policy.



What fabrics?

camira

Ethos

We have created and developed a CEU called, Specifying Sustainable Textiles to Help Enhance Health and Wellbeing, which is designed to educate specifiers on why sustainable fabrics are an important part of the finish selection process, and equip them with helpful information to confidently select the best options for clients wishing to make wellness a priority. [Click here](#) to take a dive into the learning objectives.

Raw Materials

Nettle, hemp, flax, wool and even silk are among the natural and rapidly renewable contents that are blended by our design and technical teams to make beautiful, inherently flame retardant textiles. These textiles meet various price points, application needs and are suitable for interior environments where sustainability is of the utmost importance. So our sustainable textile expertise goes right from farm to fabric and we handle everything in between.

Manufacturing

Designing and manufacturing bast fiber textiles, which are made from innovative blends of pure new wool combined with naturally occurring textile fibers derived from harvested nettles, hemp and flax. Bast fibers are found in the outer part of the stem of the plant, giving the textiles strong, elastic and flexible properties suitable for interiors, like Main Line Flax, Hemp and Patina.

Certificates

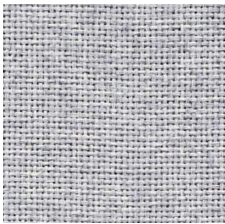
These sustainable textiles incorporate innate performance properties of bast fibers and wool, which allows them to achieve commercial FR certification- without the need for chemical post treatment. A wide variety of these sustainable textiles are certified to the EU Ecolabel and Indoor Advantage Gold- which both contribute to environmental building standards.



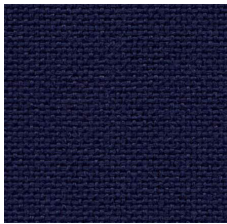
What fabrics?

camira

Below you will find a selection of popular fabrics,
Discover their full range at: www.camirafabrics.com



Cara
EJ004



Cara
EJ011



Cara
EJ015



Cara
EJ016



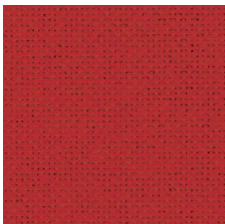
Cara
EJ033



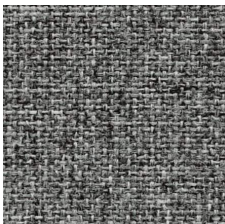
Cara
EJ038



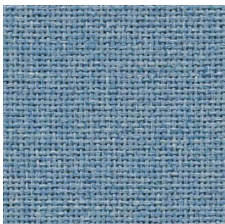
Cara
EJ048



Cara
EJ076



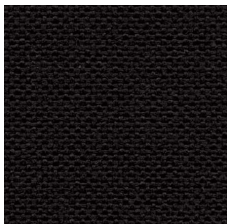
Cara
EJ104



Cara
EJ105



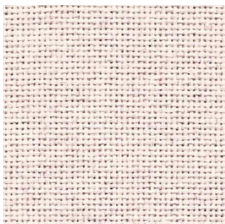
Cara
EJ125



Cara
EJ138



Cara
EJ154



Cara
EJ169



Cara
EJ172



Cara
EJ173



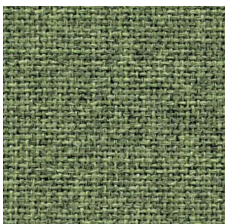
Cara
EJ175



Cara
EJ180



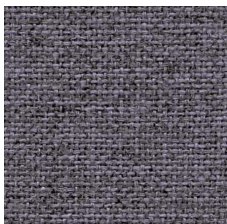
Cara
EJ184



Cara
EJ185



Cara
EJ186



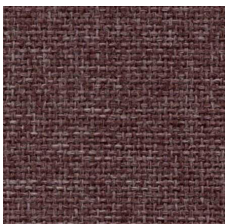
Cara
EJ188



Cara
EJ191



Cara
EJ195

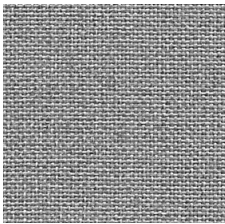


Cara
EJ197

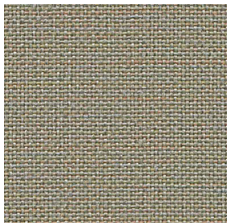
What fabrics?

camira

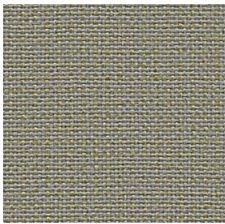
Below you will find a selection of popular fabrics,
Discover their full range at: www.camirafabrics.com



Carlow
CLW01



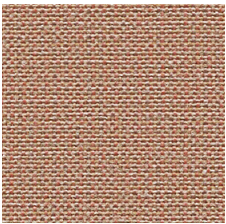
Carlow
CLW02



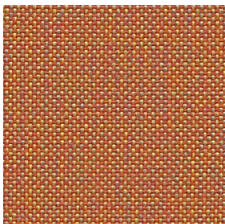
Carlow
CLW03



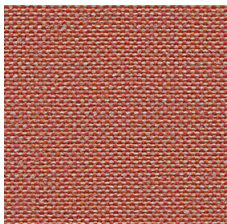
Carlow
CLW04



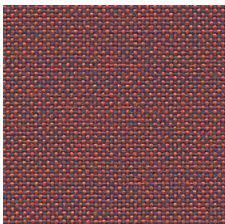
Carlow
CLW05



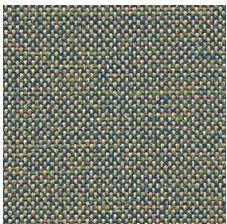
Carlow
CLW06



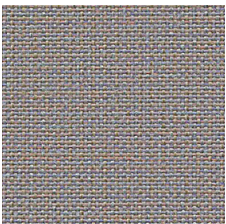
Carlow
CLW07



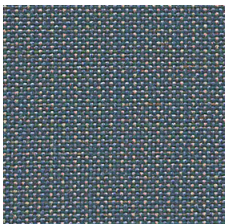
Carlow
CLW08



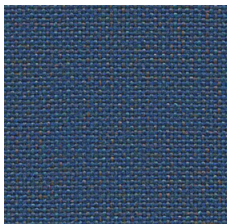
Carlow
CLW09



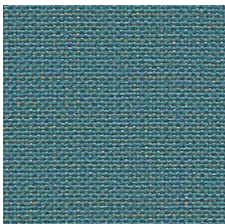
Carlow
CLW10



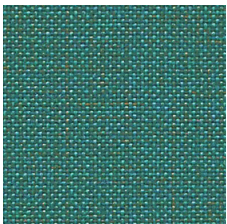
Carlow
CLW11



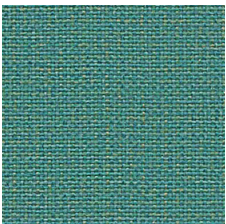
Carlow
CLW12



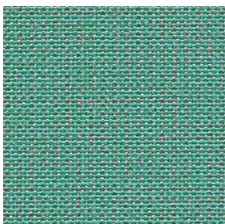
Carlow
CLW13



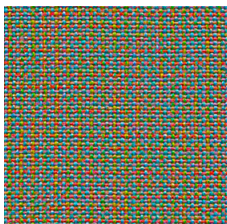
Carlow
CLW14



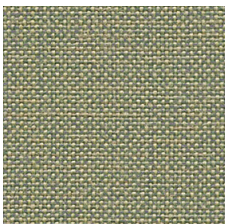
Carlow
CLW15



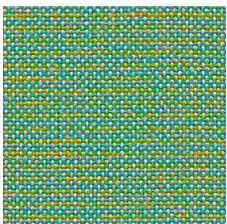
Carlow
CLW16



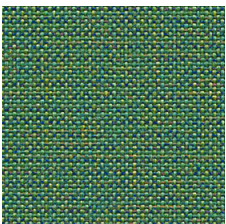
Carlow
CLW17



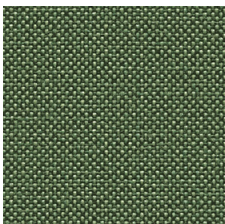
Carlow
CLW18



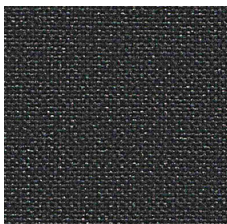
Carlow
CLW19



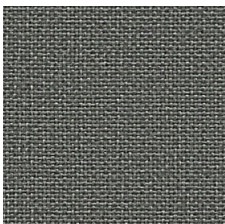
Carlow
CLW20



Carlow
CLW21



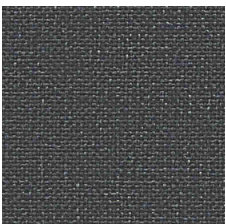
Carlow
CLW22



Carlow
CLW23



Carlow
CLW24

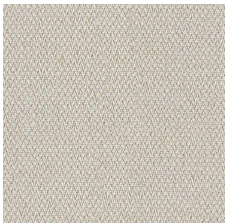


Carlow
CLW25

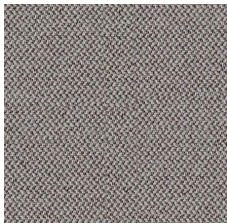
What fabrics?

camira

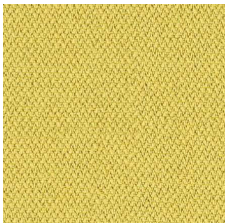
Below you will find a selection of popular fabrics,
Discover their full range at: www.camirafabrics.com



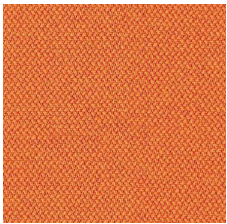
Era
CSE01



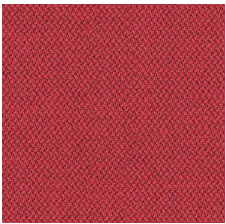
Era
CSE02



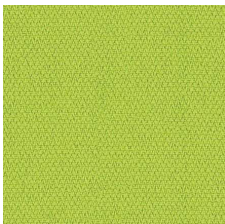
Era
CSE03



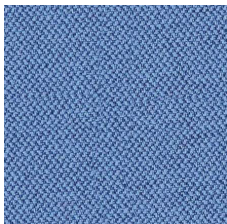
Era
CSE05



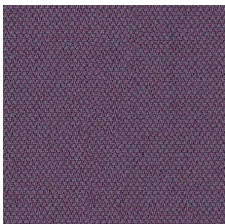
Era
CSE06



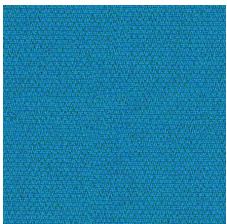
Era
CSE07



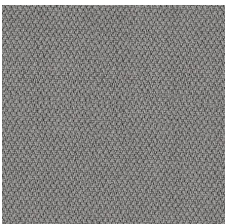
Era
CSE08



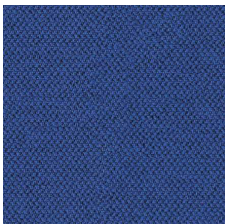
Era
CSE09



Era
CSE10



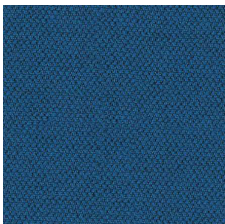
Era
CSE11



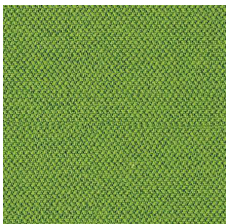
Era
CSE12



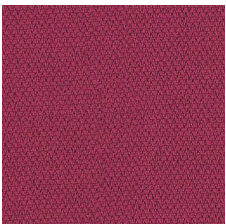
Era
CSE13



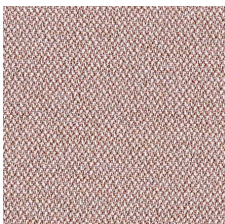
Era
CSE15



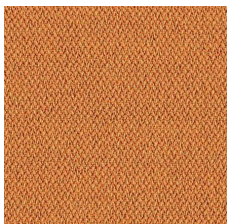
Era
CSE16



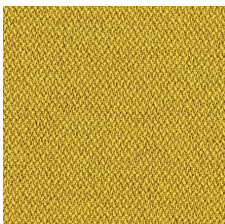
Era
CSE17



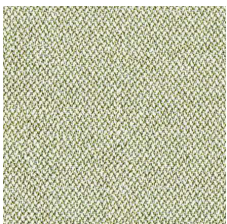
Era
CSE24



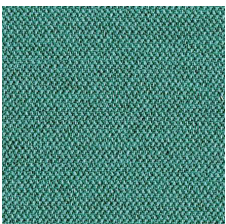
Era
CSE27



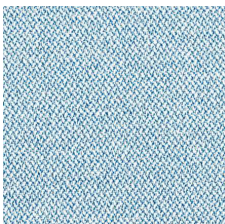
Era
CSE32



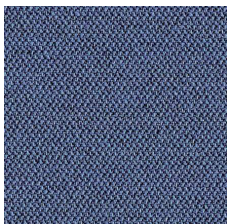
Era
CSE33



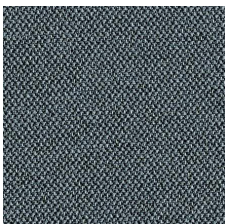
Era
CSE37



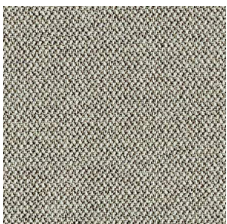
Era
CSE38



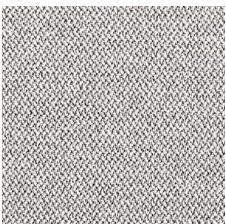
Era
CSE42



Era
CSE44



Era
CSE45

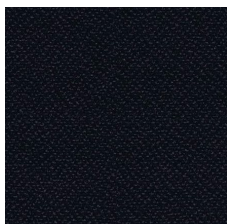


Era
CSE46

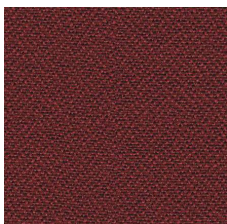
What fabrics?

camira

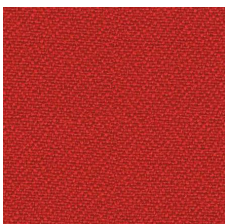
Below you will find a selection of popular fabrics,
Discover their full range at: www.camirafabrics.com



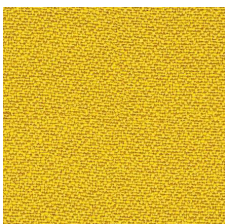
Lucia
LC009



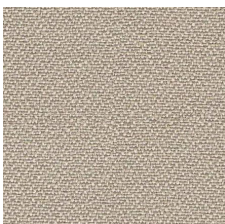
Lucia
LC175



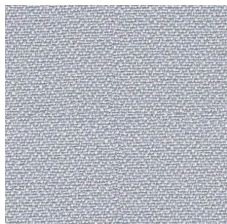
Lucia
LC079



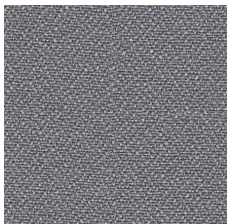
Lucia
LC415



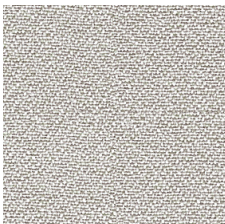
Lucia
LC108



Lucia
LC173



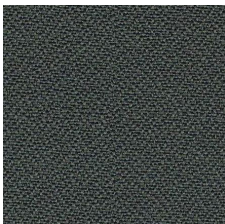
Lucia
LC094



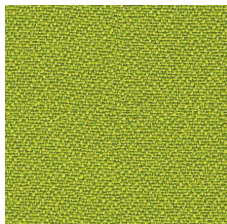
Lucia
LC434



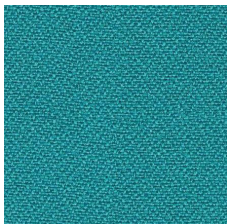
Lucia
LC081



Lucia
LC182



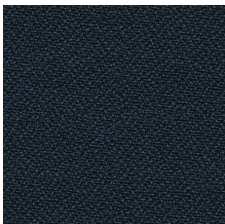
Lucia
LC419



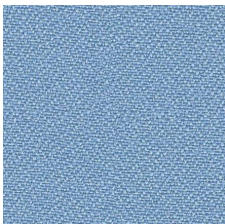
Lucia
LC421



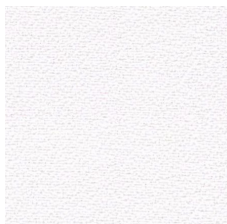
Lucia
LC424



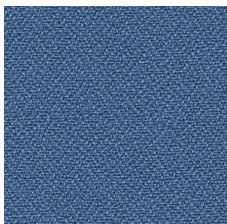
Lucia
LC026



Lucia
LC422



Lucia
LC165

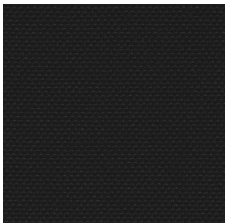


Lucia
LC433

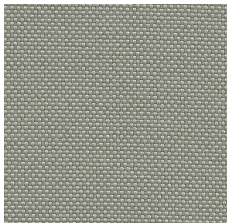
What fabrics?

camira

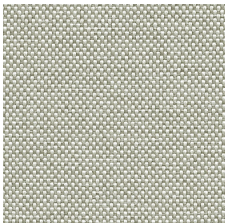
Below you will find a selection of popular fabrics,
Discover their full range at: www.camirafabrics.com



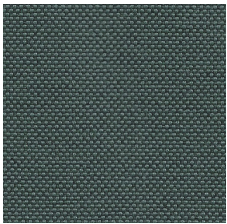
Quest
QUE01



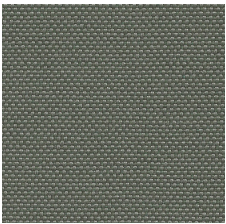
Quest
QUE02



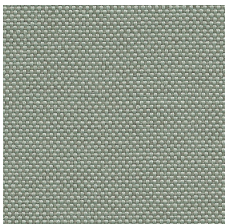
Quest
QUE03



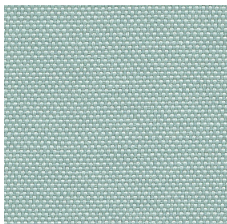
Quest
QUE04



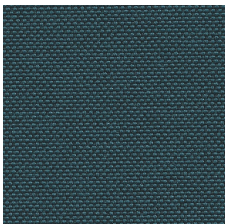
Quest
QUE05



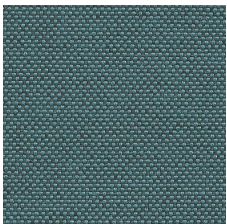
Quest
QUE06



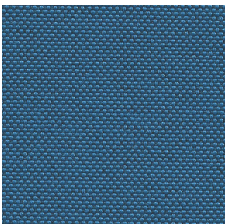
Quest
QUE07



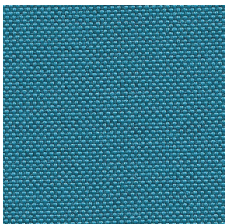
Quest
QUE08



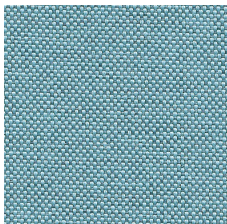
Quest
QUE09



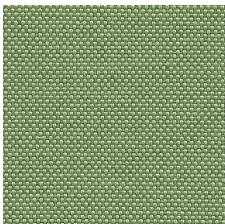
Quest
QUE10



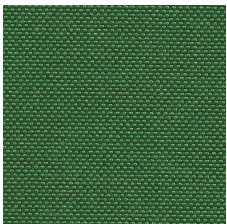
Quest
QUE11



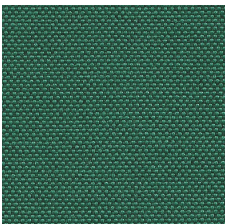
Quest
QUE12



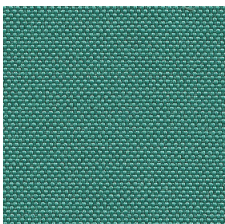
Quest
QUE13



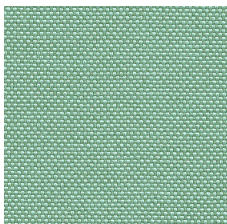
Quest
QUE14



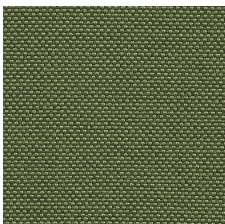
Quest
QUE15



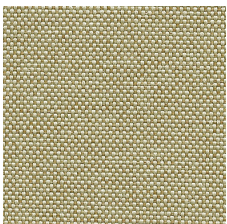
Quest
QUE16



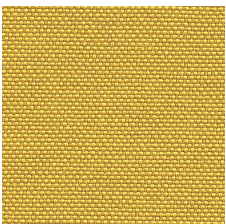
Quest
QUE17



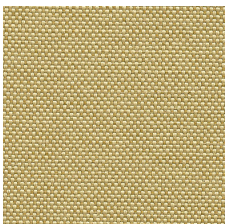
Quest
QUE18



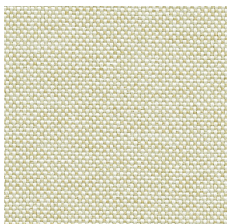
Quest
QUE19



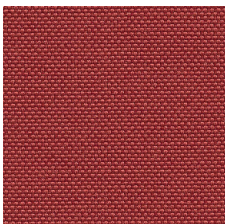
Quest
QUE20



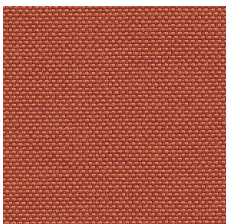
Quest
QUE21



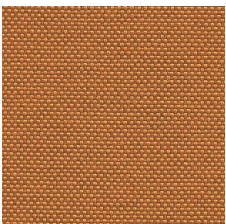
Quest
QUE22



Quest
QUE23



Quest
QUE24

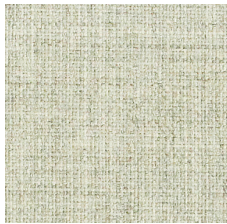


Quest
QUE25

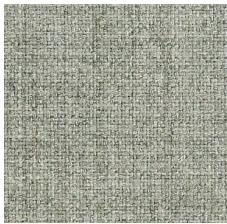
What fabrics?

camira

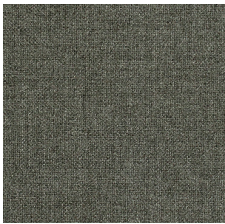
Below you will find a selection of popular fabrics,
Discover their full range at: www.camirafabrics.com



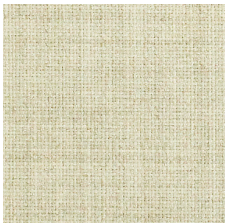
Sumi
SUR01



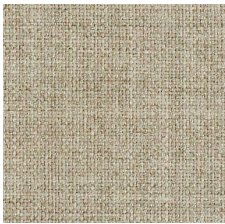
Sumi
SUR02



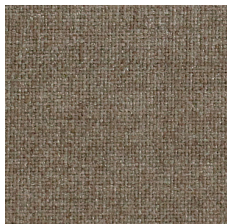
Sumi
SUR03



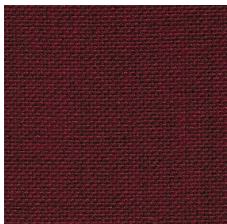
Sumi
SUR04



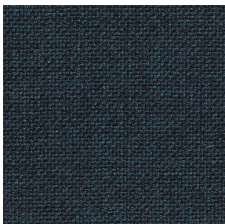
Sumi
SUR05



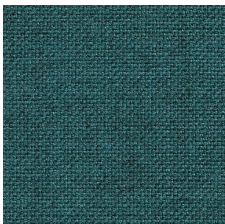
Sumi
SUR06



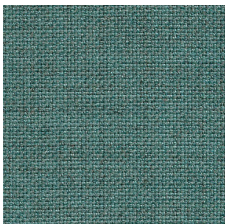
Sumi
SUR07



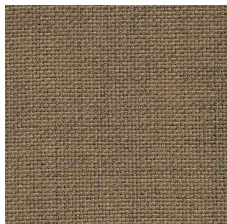
Sumi
SUR08



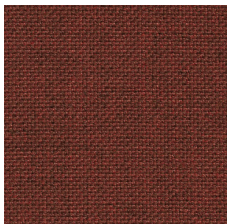
Sumi
SUR09



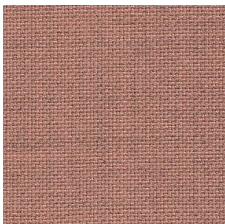
Sumi
SUR10



Sumi
SUR11



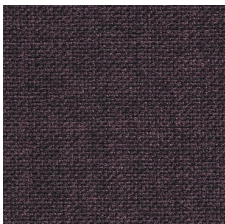
Sumi
SUR12



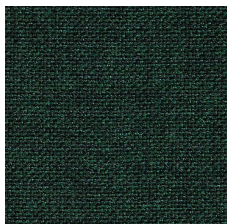
Sumi
SUR13



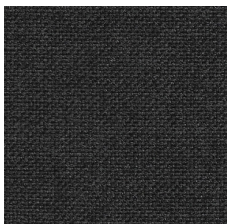
Sumi
SUR14



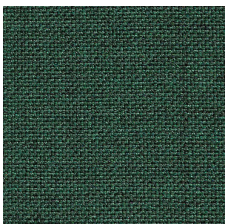
Sumi
SUR15



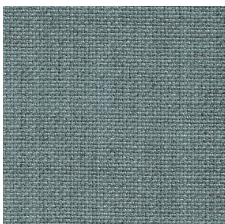
Sumi
SUR16



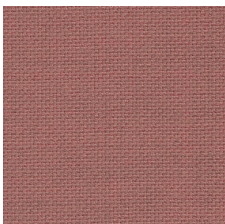
Sumi
SUR17



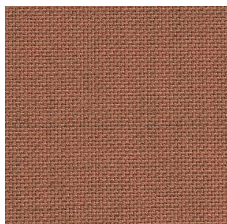
Sumi
SUR18



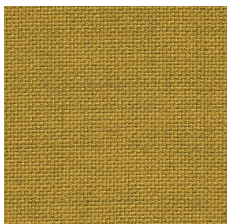
Sumi
SUR19



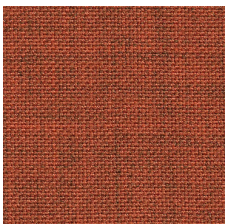
Sumi
SUR20



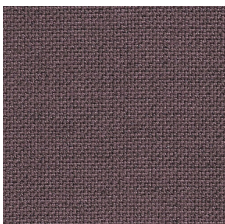
Sumi
SUR21



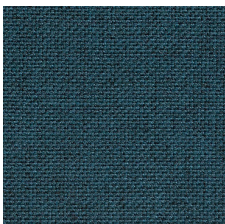
Sumi
SUR22



Sumi
SUR23



Sumi
SUR24



Sumi
SUR25

What fabrics?

AVOCA

Our mill, set in the charming village of Avoca Co. Wicklow, could easily be overlooked as a picture-perfect relic of times gone by. However, within these white washed walls lies the hub and heart of our weaving industry. All of our weaving and much of our design processes occur here. We love welcoming visitors to our mill where they can soak up the atmosphere and observe the weaving journey in progress. Having seen first-hand the care and attention which goes into each piece, visitors can continue to our shop and enjoy some of the delicious homemade sweet and savoury treats on offer in our cafe.



Sustainability

At Avoca, our history began almost 300 years ago with craft at the core - it's woven into the very fabric of who we are. We have been designing and making our own beautiful woven throws here in Wicklow since 1723. Our commitment to Irish craft remains at the heartbeat of what we do

Community Quality

The first step in our design process is the inspiration. We love to bounce ideas off each other, and discuss the myriad of places we draw our inspiration from. This could be nature, art, travel, scenery or any number of things! We begin with a photo, a sketch or a painting, and we often find ourselves inspired by the natural elements surrounding us, such as the beautiful vale of Avoca surrounding our weaving mill.



What fabrics?

AVOCA

Family Ethos

Much of what you see in our stores has been designed by our in-house creative team. We are passionate about Irish craft and design, and love to create the unusual and the beautiful. From our famous throws and traditional tailored tweed suits of the original Avoca label, our Wicklow-based design studio now create everything from clothing and homeware to candles and soaps, and much, much more.

Raw Materials

The warping frame is the first stage in our weaving journey. The pattern for the weave is handed over from our design team, and we create a pattern for the design. This determines the count and colours of the warp threads, which are stretched across the loom. The weft threads are then woven over and under to create the fabric. Our warping frame holds 384 cones of yarn, which are then placed in order onto the creel, feeding the threads in the correct sequence through the swift. Then, they are wound around individual beams which are lifted into the looms where the warp is tied in. Now, the weaving process can begin.

Manufacturing

Some members of our mill's experienced weaving team remember starting with us when these stages of the weaving process would have been very different. Threads were transferred onto pirns, a long conical rod which weft thread is wound around, to be placed in the shuttles for our hand looms. This was at one point done using a bicycle wheel and later a pirn winding machine which we still use today. Our warping frames also looked very different and were all created by hand. These methods are very time and labour intensive and only allowed for a small quantity to be produced.

Certificates

Frequent winner of awards like the Irish Country Magazine Irish Made Awards textiles category with the Harriet Mohair Tweed Throw.



What fabrics?



Because we develop and distribute our wallcovering, upholstery and curtain fabrics ourselves, we basically control the whole of the production supply chain. This means that we are also capable of limiting the impact of our activities on the environment. Quality, therefore, is never just related to the product at Vescom. It also concerns the production process.



Sustainability

Our quality assurance system was certified in accordance with ISO 9001 as long ago as 1993. Ever since, we have incorporated environmental legislation and policy in our work instructions as a matter of course. We have made drawing up and executing company environmental plans a mandatory element of business policy. In 2001, we were the first company within our sector to introduce the ISO 14001 environmental management system.

Community Quality

We continue to select our partners and suppliers based on a criterion of double quality standards: both in terms of the product and in terms of environmental care. Nearly all our suppliers of raw materials are ISO 14001 certified. The same applies for most of our suppliers of semi-finished and finished products. We map out environmental aspects at these suppliers and continuously search for solutions together with them.



What fabrics?



Raw Materials

We use a significant quantity of paper for our brochures and collection presentation binders. This has been FSC certified since January 2009. This means that the wood used for our paper comes from responsibly managed forests in accordance with the rules of the Forest Stewardship Council (FSC). As you can see, we continue to search for ways of reducing the impact that our raw materials usage has on the environment.

Manufacturing

We continually search for ways of making this process cleaner and more efficient. We offer our customers a collection in which sustainable choices can be made. Focused operational management ensures minimal environmental impact. One of the environmental advantages of our products is, of course, the long service life.

Energy

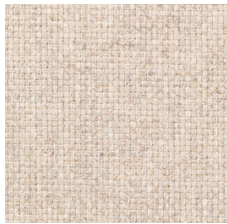
Vescom uses exclusively green electricity and gas. The head office in Deurne, including the factory, works 100% CO-2 neutral. We, in principle, choose the most environmentally-friendly alternative with regard to new investments. Even when this is proportionally more expensive. This approach has allowed us to achieve substantial savings in our consumption of energy and water in recent years. The energy saving measures we have implemented in our buildings are perhaps not as sensational, but no less effective. This involves our lighting, heating and insulation. All these measures have resulted in a drop in our energy consumption per unit of product in the last few years. Our gas consumption is barely higher than 25 years ago. This while the production level has more than doubled and the number of company buildings has increased. Our electricity consumption has developed in line with our growth in production. In the mid nineteen nineties, we reduced our consumption of cooling water to 1,000 m³ per annum by implementing a closed circuit system for cooling our machines.



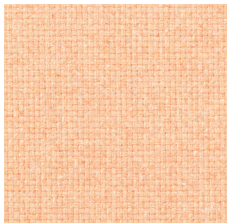
What fabrics?



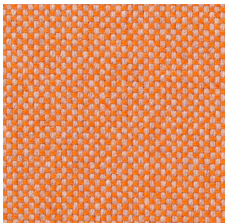
Below you will find a selection of popular fabrics,
Discover their full range at: www.vescom.com



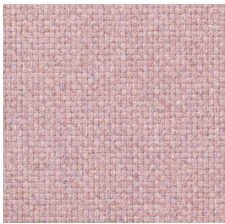
lamu
7051.01



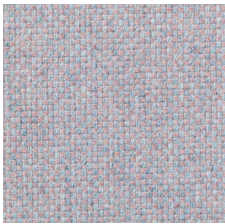
lamu
7051.02



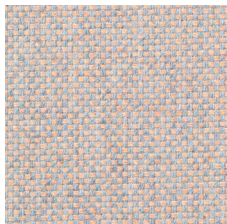
lamu
7051.03



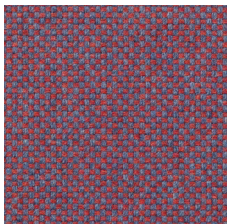
lamu
7051.04



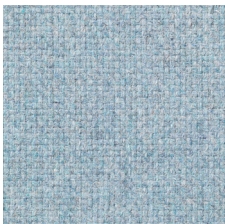
lamu
7051.05



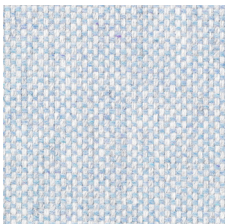
lamu
7051.06



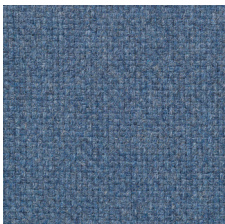
lamu
7051.07



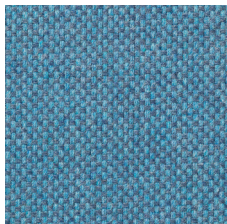
lamu
7051.08



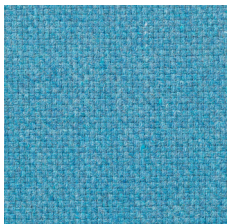
lamu
7051.09



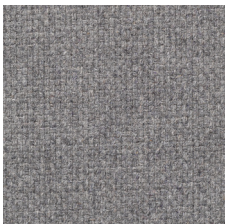
lamu
7051.10



lamu
7051.11



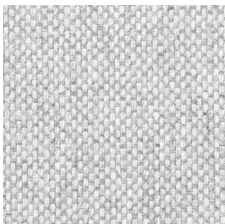
lamu
7051.12



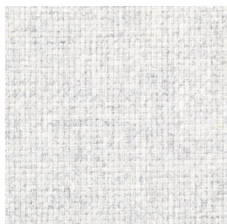
lamu
7051.13



lamu
7051.14



lamu
7051.15



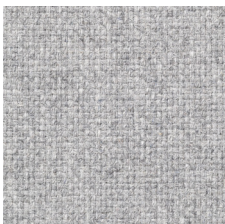
lamu
7051.16



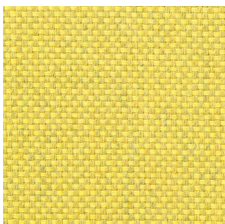
lamu
7051.17



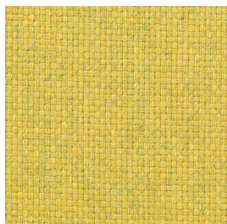
lamu
7051.18



lamu
7051.19



lamu
7051.20



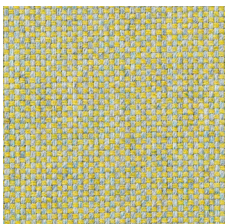
lamu
7051.21



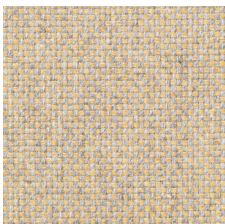
lamu
7051.22



lamu
7051.23



lamu
7051.24

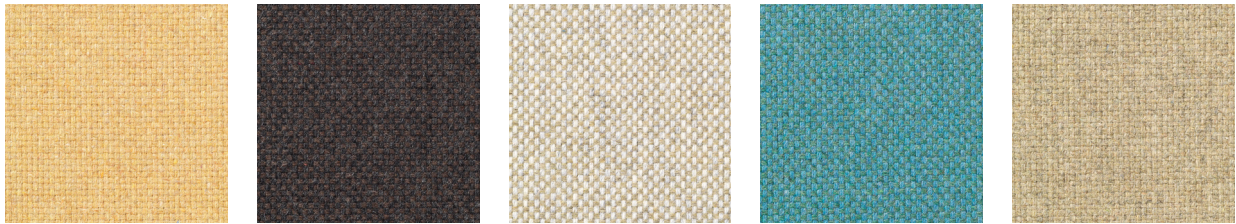


lamu
7051.25

What fabrics?



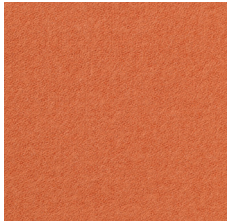
Below you will find a selection of popular fabrics,
Discover their full range at: www.vescom.com



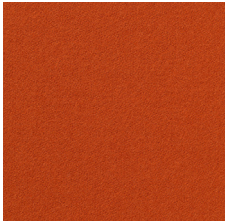
lamu
7051.26



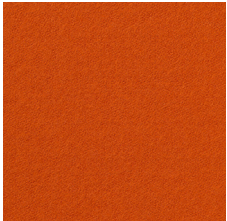
lamu
7051.27



lamu
7051.28



lamu
7051.29



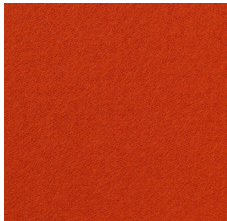
lamu
7051.30



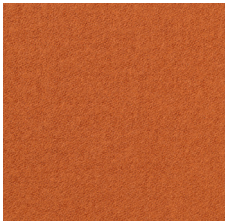
lani
7060.01



lani
7060.02



lani
7060.03



lani
7060.04



lani
7060.05



lani
7060.06



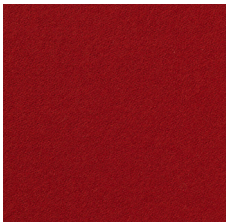
lani
7060.07



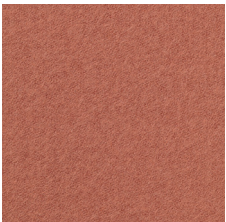
lani
7060.08



lani
7060.09



lani
7060.10



lani
7060.11



lani
7060.12



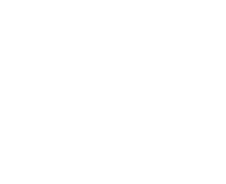
lani
7060.13



lani
7060.14



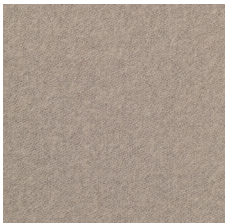
lani
7060.15



What fabrics?



Below you will find a selection of popular fabrics,
Discover their full range at: www.vescom.com



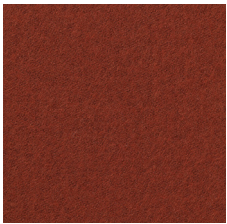
Iani
7060.16



Iani
7060.17



Iani
7060.18



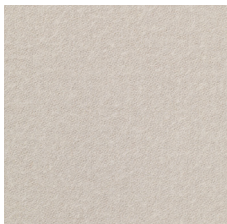
Iani
7060.19



Iani
7060.20



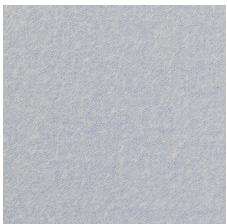
Iani
7060.21



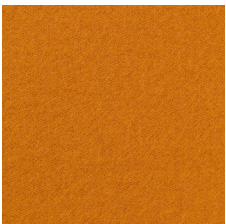
Iani
7060.22



Iani
7060.23



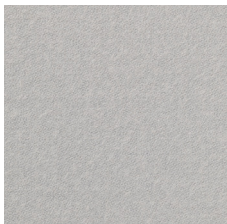
Iani
7060.24



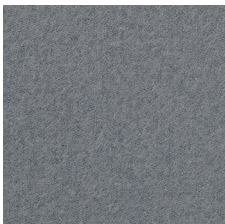
Iani
7060.25



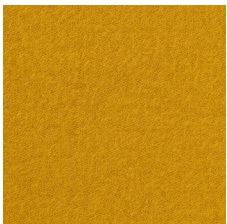
Iani
7060.26



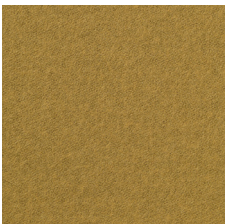
Iani
7060.27



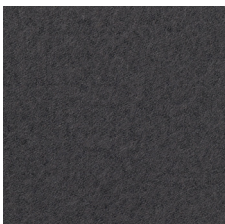
Iani
7060.28



Iani
7060.29



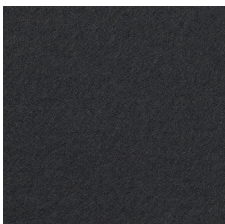
Iani
7060.30



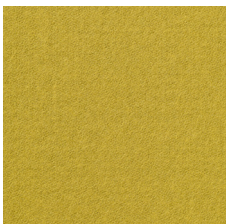
Iani
7060.31



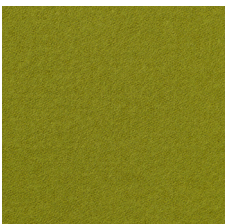
Iani
7060.32



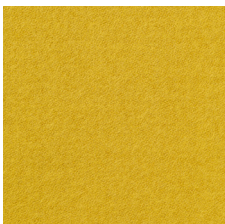
Iani
7060.33



Iani
7060.34



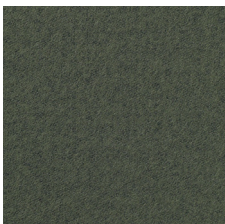
Iani
7060.35



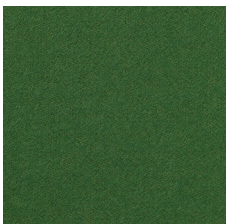
Iani
7060.36



Iani
7060.37



Iani
7060.38



Iani
7060.39

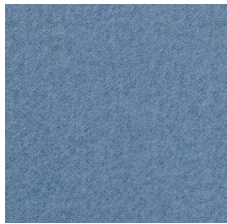


Iani
7060.40

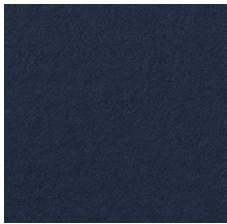
What fabrics?



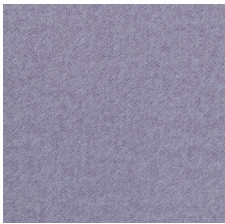
Below you will find a selection of popular fabrics,
Discover their full range at: www.vescom.com



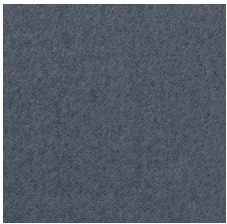
Iani
7060.41



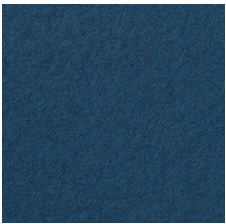
Iani
7060.42



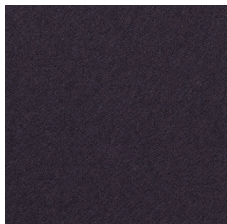
Iani
7060.43



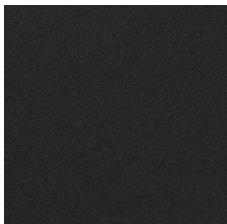
Iani
7060.44



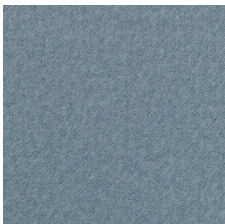
Iani
7060.45



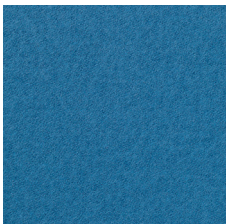
Iani
7060.46



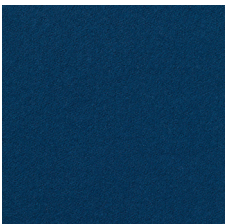
Iani
7060.47



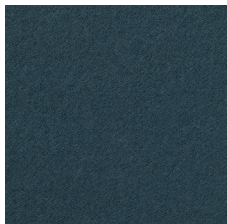
Iani
7060.48



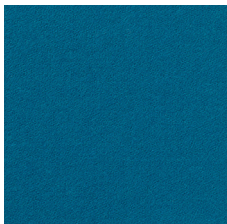
Iani
7060.49



Iani
7060.50



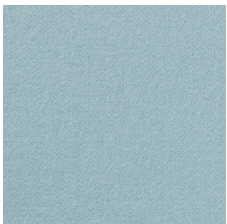
Iani
7060.51



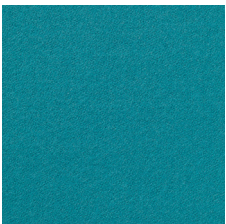
Iani
7060.52



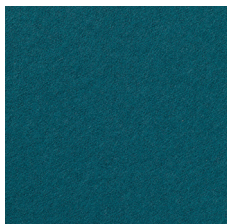
Iani
7060.53



Iani
7060.54



Iani
7060.55

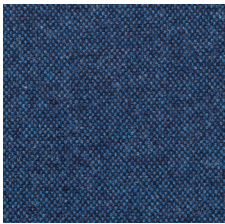


Iani
7060.56

What fabrics?



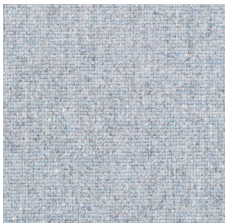
Below you will find a selection of popular fabrics,
Discover their full range at: www.vescom.com



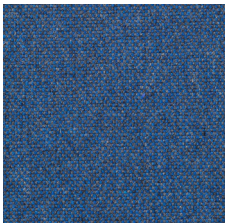
Wolin
7050.01



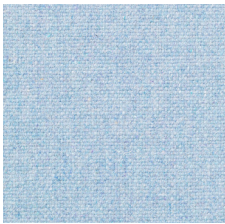
Wolin
7050.02



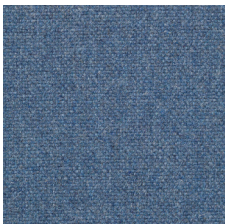
Wolin
7050.03



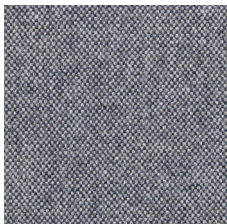
Wolin
7050.04



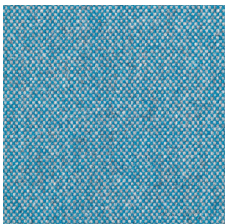
Wolin
7050.05



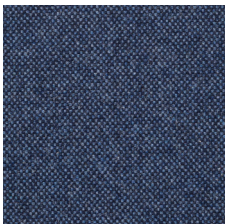
Wolin
7050.06



Wolin
7050.07



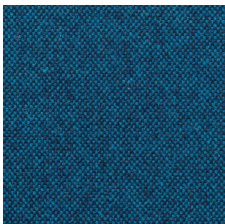
Wolin
7050.08



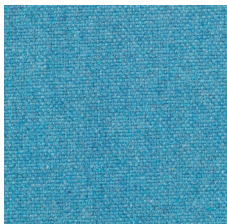
Wolin
7050.09



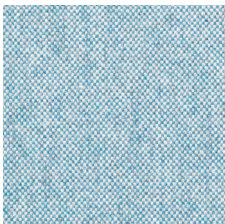
Wolin
7050.10



Wolin
7050.11



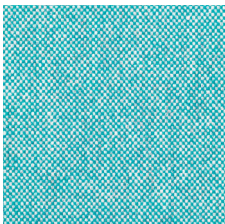
Wolin
7050.12



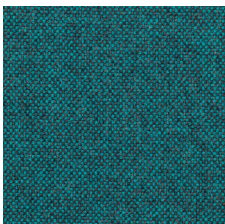
Wolin
7050.13



Wolin
7050.14



Wolin
7050.15



Wolin
7050.16



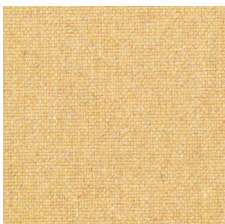
Wolin
7050.17



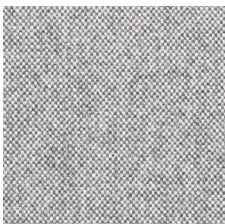
Wolin
7050.18



Wolin
7050.19



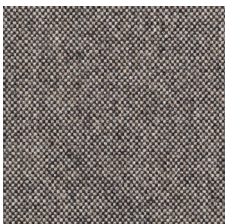
Wolin
7050.20



Wolin
7050.21



Wolin
7050.22



Wolin
7050.23



Wolin
7050.24

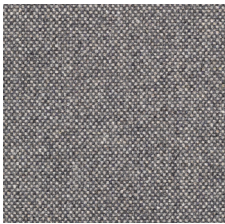


Wolin
7050.25

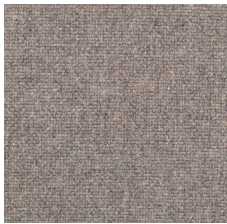
What fabrics?



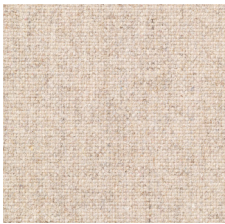
Below you will find a selection of popular fabrics,
Discover their full range at: www.vescom.com



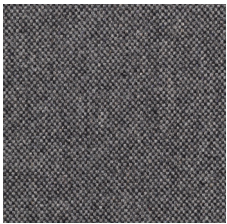
Wolin
7050.26



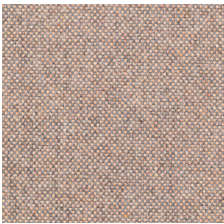
Wolin
7050.27



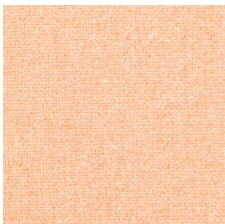
Wolin
7050.28



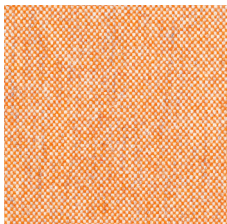
Wolin
7050.29



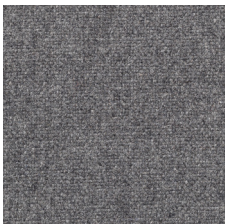
Wolin
7050.30



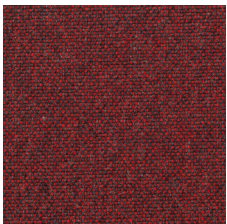
Wolin
7050.31



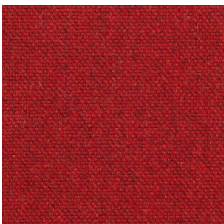
Wolin
7050.32



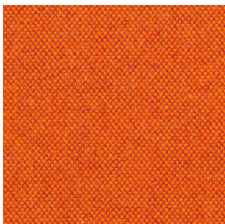
Wolin
7050.33



Wolin
7050.34



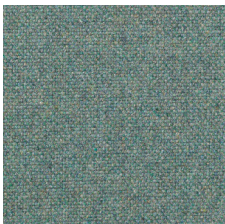
Wolin
7050.35



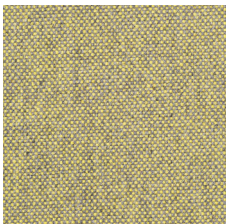
Wolin
7050.36



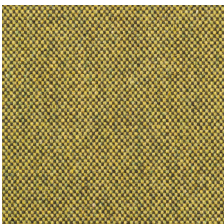
Wolin
7050.37



Wolin
7050.38



Wolin
7050.39



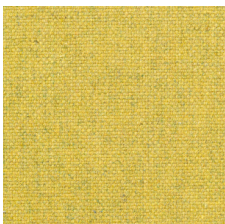
Wolin
7050.40



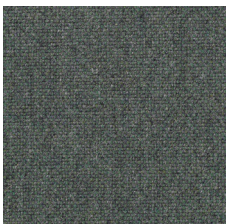
Wolin
7050.41



Wolin
7050.42



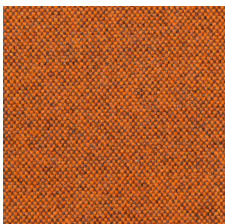
Wolin
7050.43



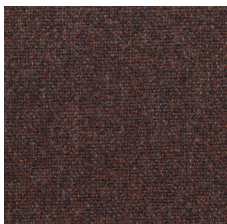
Wolin
7050.44



Wolin
7050.45



Wolin
7050.46



Wolin
7050.47

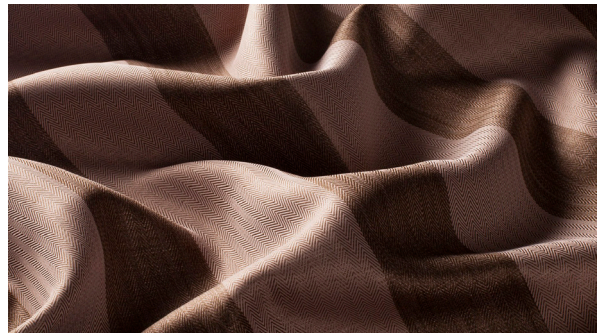
What fabrics?



Creativity, passion, goal-oriented action: This has been our driving force since 1946. The challenges at that time were different, but the philosophy remained the same: An open relationship, between us and our business partners all over the world, but also inside our company, at all levels, with every single individual. This is how we create trust, use synergies and achieve what we set out to do.

Sustainability

Sustainable action for the good of the environment and social interaction has always been one of our most important concerns. We want to keep getting better in this too. Sustainability - this



does not only concern the climate, the quality of the air, the CO2 balance, the protection of the water, the containment of waste and the economical use of energy.

Community Quality

Of course there are key figures. For example, how many kilowatt hours of environmentally friendly electricity our photovoltaic plant and our biogas combined heat and power plants produce and how many tons of CO2 we save each year through the two plants. But that's only a part of it. Sustainability also implies the sum of all the many smaller, sometimes incalculable measures, such as the use of environmentally friendly paper, energetically correct heating, recycling of paper waste and much more, all of which have a sustainable effect. Recognizing such potential and further developing our company's sustainability feature is high on the agenda of our employees and us, for the coming years.



What fabrics?



Ethos

Initiated by the German Federal Ministry for Economic Cooperation and Development in fall 2018. Over 700 members from large and small businesses, SMEs, associations, government agencies, universities, project developers, offset providers and civil society. Definition and Goals: All members are committed to the goal of reducing or avoiding CO₂ emissions as much as possible. Unavoidable emissions are to be offset by certified climate protection projects.

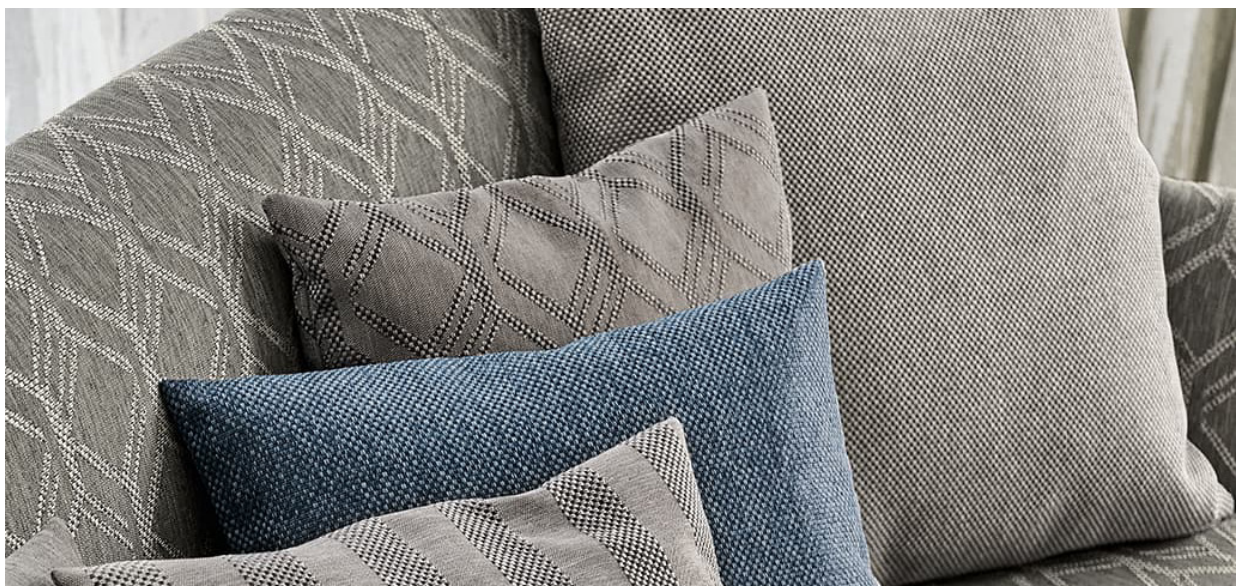
Energy

Our fabrics are 100% Made in Germany and produced using renewable energy sources

To certify our commitment to climate-friendly energy supply, we regularly undergo the energy audit according to DIN EN 16247-1. We are continuously working on making our company location even more ecological. The inclusion of the climatex® product in the sales programme was an important step for us: Our company was awarded the „Cradle 2 Cradle“ certificate in gold for this 100 % recyclable high-tech fabric innovation.

Certificates

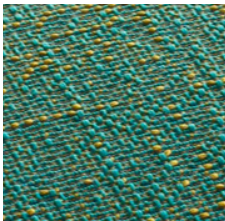
The components of our climatex® textiles can be cleanly separated and recycled. The sustainability of the fabrics is certified by Ökotex and Cradle to Cradle – Level Silver. Natural fibres are composted, synthetic fibres are 100% recycled.



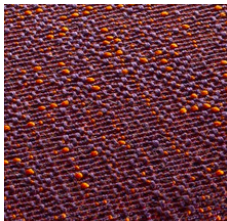
What fabrics?



Below you will find a selection of popular fabrics,
Discover their full range at: www.jab.de



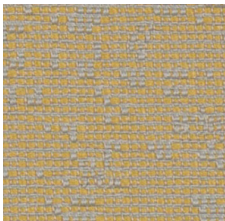
Jab
Assam 1



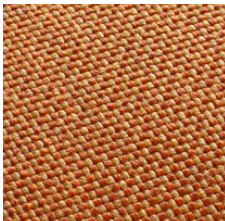
Jab
Assam 2



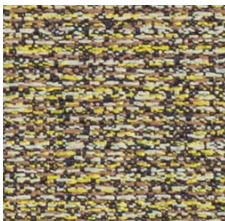
Jab
Balani



Jab
Grano



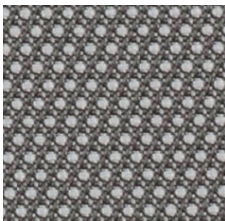
Jab
Illetas



Jab
Kaori



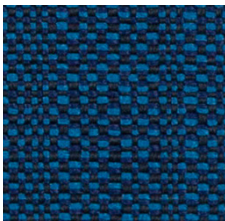
Jab
Natura



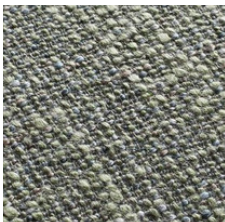
Jab
Neo



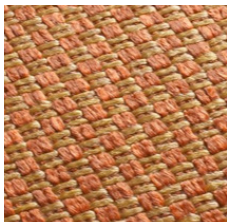
Jab
Picto



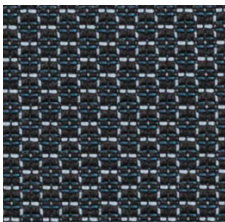
Jab
Quadro



Jab
Safe



Jab
Sallinas



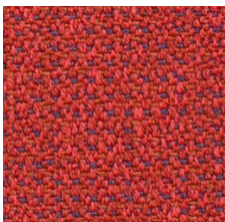
Jab
Steel



Jab
Ultra ED



Jab
Ultra



Jab
Vivo