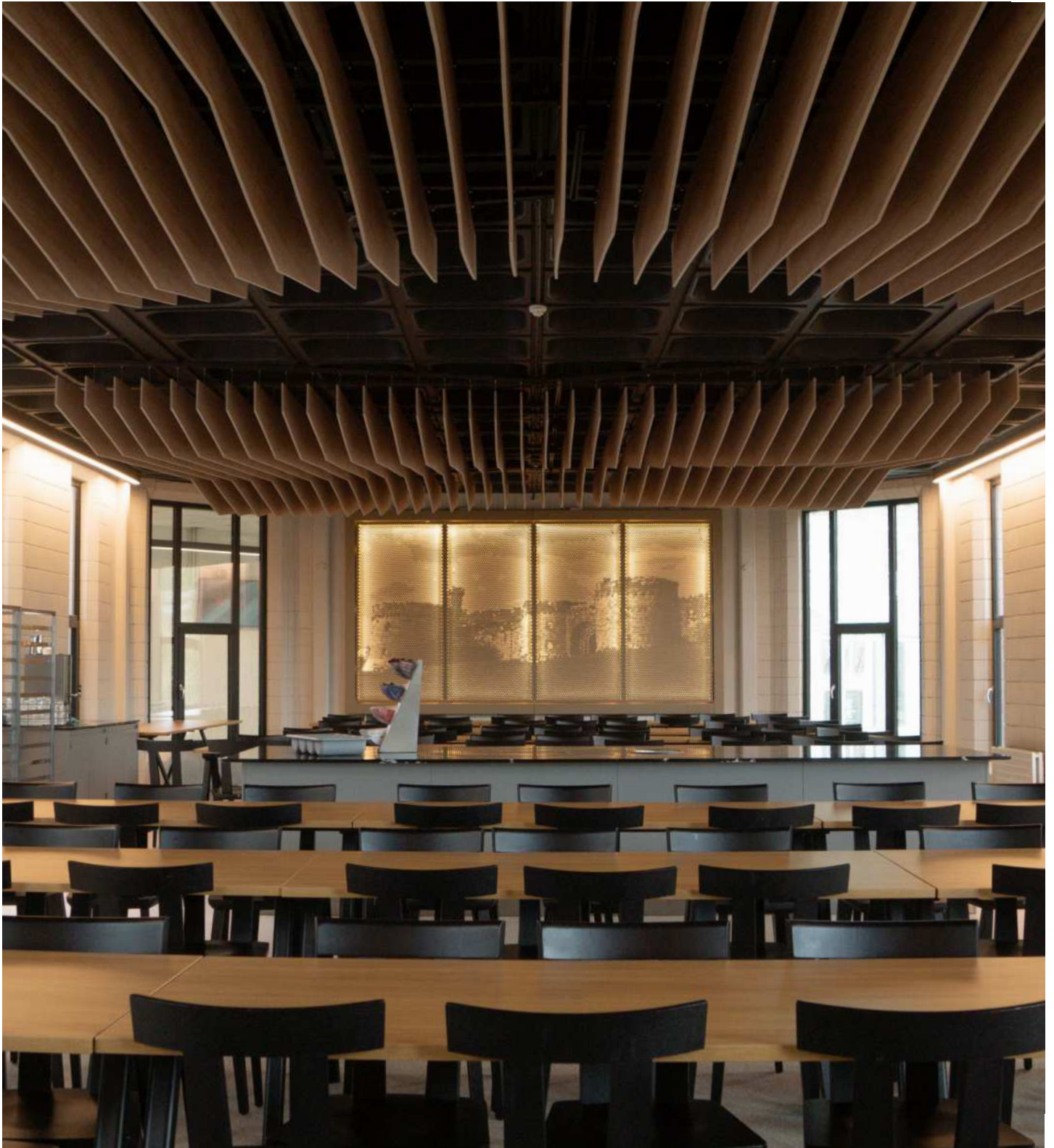


Vibe Calmtone Fins



16

Vibe Calmtone Fins, crafted from sustainable, compressed polyester, are vertical free-hanging panels that offer acoustic and thermal insulation, along with impact resistance. Their unique downward-leading edge design seamlessly integrates efficient lighting systems. Customisable with in-house printed designs, they are ideal for open-plan spaces with limited wall availability.



12-24 mm

Vibe Calmtone Fins

SPECIFICATIONS

Dimensions

Available in two depths 12mm, 24mm.
Panel size 2440mm x 1220mm.
Recommended spacing 300mm.

Density

12mm - 2,4 kg/m²
24mm - 3,5 kg/m²

Materials

100% Polyester Fiber (PET) 65% recycled material.
Limited colours for 40 mm depths.

Installation system

Direct fix to wall or on battens.

Microbial Performance

ASTM G21 – 15 Growth rating: 0
(No growth).



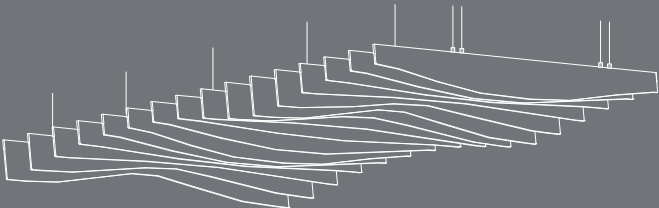
12 mm

Class D NRC 0.45



24 mm

Class C NRC 0.75



ACOUSTIC PERFORMANCE

Acoustic Absorber - Acoustic Baffle - 12 & 24mm

Frequency (Hz)	125	250	500	1000	2000	4000	NRC
Baffles 12mm	0.40	0.85	1.00	0.96	1.00	1.00	0.95
Baffles 24mm	0.45	0.85	1.00	1.00	1.00	1.00	1.00

Thermal Resistance

RO.82 (@15°)

VOC Concentration

0.009 mg/m3 (7 days)

Water vapor absorption

ASTM C1104 / C1104-13a Test conditions: 49°C, 95%RH
Water vapor absorbed and adsorbed after
4 days: 0.4% by weigh

Impact resistance

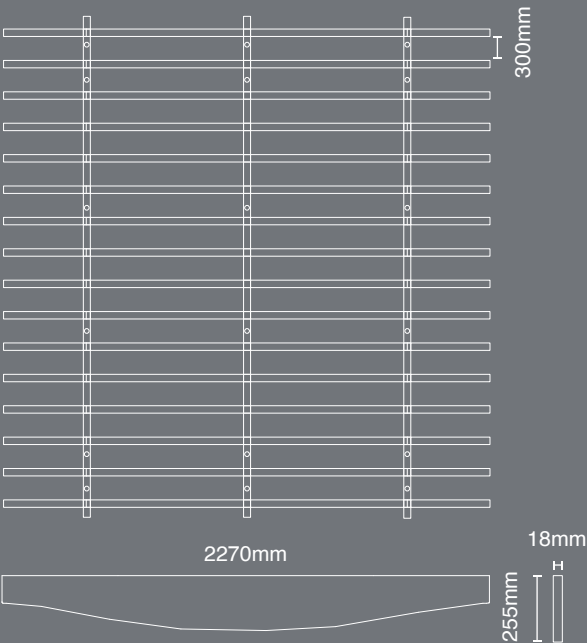
ISO 7892:1988

Colour fastness

ISO 105-X12:2016

Dry rating: 4-5 (Highest = 5)

Wet rating: 4-5 (Highest = 5)



FIRE RATING

ISO 9705: Classification: Group 1-S, AS
ISO 9705 – 2003 Classification: Group 1,
EN13501-1:2007+A1:2009: B – s2, d2.

12mm

Class D NRC 0.45 Direct Fix
Class B NRC 0.80 50mm Air Gap

24mm

Class C NRC 0.75 Direct Fix
Class B NRC 0.75 50mm Air Gap

CUSTOMISATION

- Available in two depths 12 and 24 mm.
- Lighting can be added into the system.
- In-house printing of images or graphics.
- In-house laser etch graphics.
- Anti-Microbial Performance on request.

APPLICATIONS

- Commercial Offices
- Meeting Rooms
- Theaters
- Home Cinemas
- Recording Studios
- Restaurants
- Banks
- Libraries

40 mm

Vibe Calmtone Fins

SPECIFICATIONS

Dimensions

Panel size max. 3000 mm length. Depth on vertical access will vary. Width is 40 mm.

Density

40 mm - 4,0 kg/m²

Materials

Comprised of non-woven compressed polyester made from 60% recycled plastic bottles.

Colour

Cool white, light grey, silver grey, anthracite, black and possibility of fabric wrapped.

Additional fabric finish:

The system is designed to allow leading manufacturers in acoustic textiles and fabrics to be used inside the system.

Cool White



Light Grey



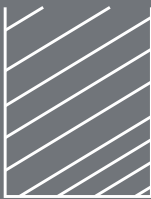
Silver Grey



Anthracite



Night Black



40 mm
Class B NRC 0.85

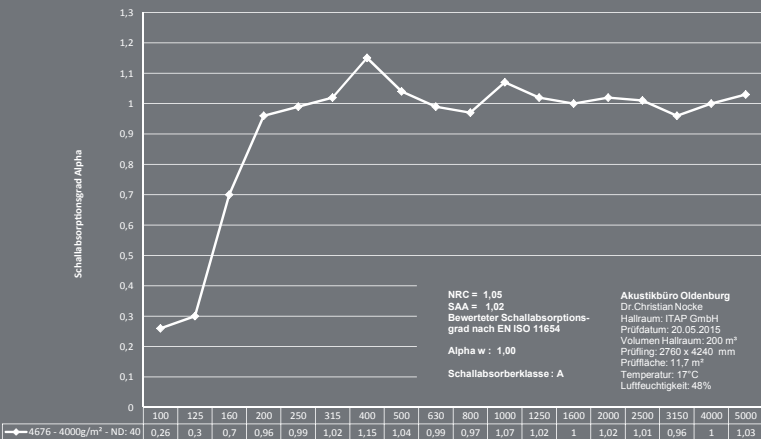
ACOUSTIC PERFORMANCE

Acoustic resistance

NRC 1.03 at 200mm from soffit

Installation system

Suspension fitting with hanging wire and spiral anchors.



FIRE RATING

BS EN 13501 Class B

CUSTOMISATION

- Lighting can be added into the system.
- Use textiles from brand leading manufacturers.
- In-house printing of images or graphics.
- In-house laser etch graphics.
- Anti-Microbial Performance on request.

APPLICATIONS

- Commercial Offices
- Meeting Rooms
- Theaters
- Home Cinemas
- Recording Studios
- Restaurants
- Banks
- Libraries

Project: Glenstal Abbey

The Vibe team designed a fully recycled compressed polyester baffle from our Calmtone product line and printed it with a Wood to create a natural finish and increase the baffles' acoustic absorption function.

A series of technical and 3D drawings, along with sample production, allowed the stakeholders to envisage clearly before production began the project's aesthetic and acoustic impact on the space and environment.

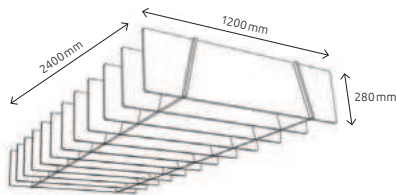




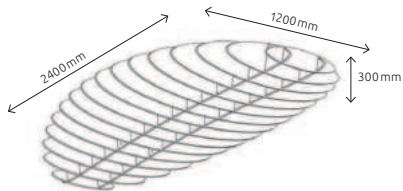


The Vibe Hive is a suspended acoustic ceiling element with an interlocking, three-dimensional hanging structure. It provides an acoustically efficient and visually appealing solution. With its modern and functional design, the Vibe Hive is made from high-quality compressed polyester, offering excellent sound absorption properties and durability. Available in three different options, this innovative ceiling element enhances both the acoustic quality and aesthetic appeal of contemporary spaces, making it an ideal choice for a variety of settings.

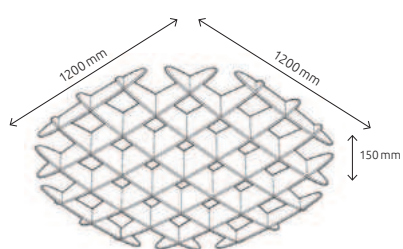
Hive 01



Hive 02



Hive 03



Project: Invesco

To combat noise distractions in Invesco's workspace, Calmtone Fins were installed. These hanging acoustic panels, made from compressed polyester, absorb sound and promote focus. Customisable depths (12mm or 24mm) ensure optimal noise control, while the panels integrate hanging lights for a well-lit, productive environment.

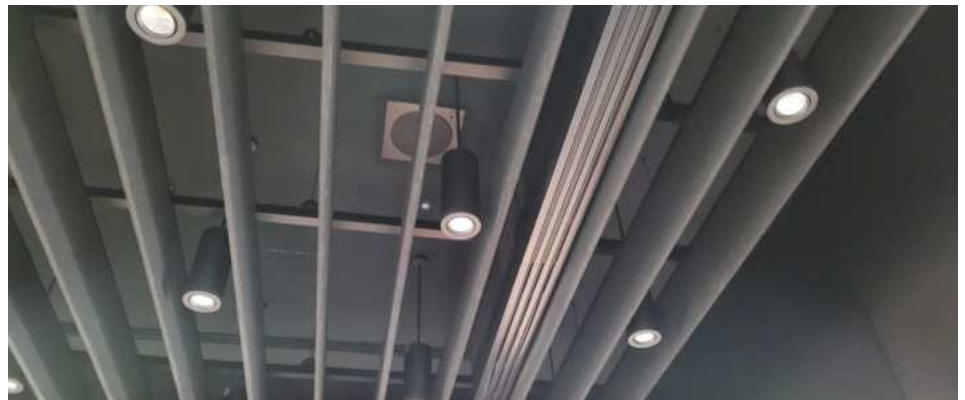




 **Invesco**

Project: MasterCard

Vision implemented a system of free-hanging acoustic ceiling baffles with integrated lighting. This design solution effectively absorbs sound, promoting a focused and conversation-friendly environment. The integrated lights ensure a well-lit workspace.



Project: AIB HQ

This project required some additional acoustics around the recreational area to allow for a more quiet peaceful part of the building that facilitated staff whilst on rest periods. The baffles in this case they were from the standard range of colours but it is also possible to get them textile wrapped and to have integrated lighting.



Vertical Calmtone fins

